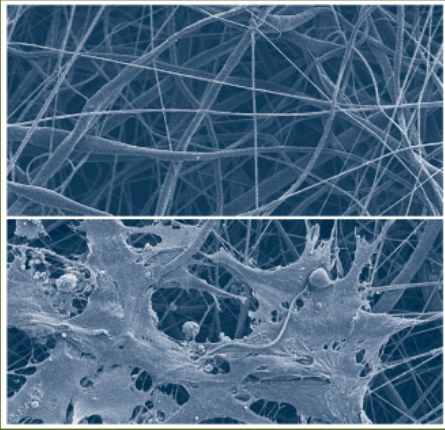


WOODHEAD PUBLISHING IN MATERIALS



Cellular response to biomaterials

Edited by Lucy Di Silvio



WP

Cellular response to biomaterials

Related titles:

Surfaces and interfaces for biomaterials
(ISBN 978-1-85573-930-7)

Given such problems as rejection, the interface between an implant and its human host is a critical area in biomaterials. *Surfaces and interfaces for biomaterials* presents our current level of understanding on the nature of a biomaterial surface, the adaptive response of the biomatrix to that surface, techniques used to modify biocompatibility, and state-of-the-art characterisation techniques to follow the interfacial events at that surface.

Tissue engineering using ceramics and polymers
(ISBN 978-1-84569-176-9)

Tissue engineering is rapidly developing as a technique for the repair and regeneration of diseased tissue in the body. This book reviews how ceramic and polymeric biomaterials are being used in tissue engineering. The first part of the book reviews the nature of ceramics and polymers as biomaterials together with techniques for using them such as building tissue scaffolds, transplantation techniques, surface modification and ways of combining tissue engineering with drug delivery and bio-sensor systems. The second part of the book discusses the regeneration of particular types of tissue from bone, cardiac and intervertebral disc tissue to skin, liver, kidney and lung tissue.

Molecular interfacial phenomena of polymers and biopolymers
(ISBN 978-1-85573-928-4)

This book combines three fundamental areas of interest to the science and engineering community, namely material science, nanotechnology and molecular engineering. Although there have been various results published in this field, there has yet to be a fully comprehensive review. *Molecular interfacial phenomena of polymers and biopolymers* covers key research on molecular mechanisms and thermodynamic behaviour of (bio)polymer surfaces and interfaces, from theoretical and experimental perspectives.

Details of these and other Woodhead Publishing materials books can be obtained by:

- visiting our web site at www.woodheadpublishing.com
- contacting Customer Services (e-mail: sales@woodheadpublishing.com; fax: +44 (0) 1223 893694; tel: +44 (0) 1223 891358 ext. 130; address: Woodhead Publishing Limited, Abington Hall, Granta Park, Great Abington, Cambridge CB21 6AH, England)

If you would like to receive information on forthcoming titles, please send your address details to: Francis Dodds (address, tel. and fax as above; e-mail: francis.dodds@woodheadpublishing.com). Please confirm which subject areas you are interested in.

Cellular response to biomaterials

Edited by
Lucy Di Silvio



CRC Press
Boca Raton Boston New York Washington, DC

WOODHEAD PUBLISHING LIMITED
Cambridge New Delhi

Published by Woodhead Publishing Limited, Abington Hall, Granta Park
Great Abington, Cambridge CB21 6AH, England
www.woodheadpublishing.com

Woodhead Publishing India Pvt Ltd, G-2, Vardaan House, 7/28 Ansari Road, Daryaganj,
New Delhi – 110002, India

Published in North America by CRC Press LLC, 6000 Broken Sound Parkway, NW,
Suite 300, Boca Raton, FL 33487, USA

First published 2009, Woodhead Publishing Limited and CRC Press LLC
© 2009, Woodhead Publishing Limited
The authors have asserted their moral rights.

This book contains information obtained from authentic and highly regarded sources. Reprinted material is quoted with permission, and sources are indicated. Reasonable efforts have been made to publish reliable data and information, but the authors and the publishers cannot assume responsibility for the validity of all materials. Neither the authors nor the publishers, nor anyone else associated with this publication, shall be liable for any loss, damage or liability directly or indirectly caused or alleged to be caused by this book.

Neither this book nor any part may be reproduced or transmitted in any form or by any means, electronic or mechanical, including photocopying, microfilming and recording, or by any information storage or retrieval system, without permission in writing from Woodhead Publishing Limited.

The consent of Woodhead Publishing Limited does not extend to copying for general distribution, for promotion, for creating new works, or for resale. Specific permission must be obtained in writing from Woodhead Publishing Limited for such copying.

Trademark notice: Product or corporate names may be trademarks or registered trademarks, and are used only for identification and explanation, without intent to infringe.

British Library Cataloguing in Publication Data

A catalogue record for this book is available from the British Library.

Library of Congress Cataloging in Publication Data

A catalog record for this book is available from the Library of Congress.

Woodhead Publishing ISBN 978-1-84569-358-9 (book)
Woodhead Publishing ISBN 978-1-84569-547-7 (e-book)
CRC Press ISBN 978-1-4200-9373-5
CRC Press order number WP9373

The publishers' policy is to use permanent paper from mills that operate a sustainable forestry policy, and which has been manufactured from pulp which is processed using acid-free and elemental chlorine-free practices. Furthermore, the publishers ensure that the text paper and cover board used have met acceptable environmental accreditation standards.

Project managed by Macfarlane Book Production Services, Dunstable,
Bedfordshire, England (e-mail: macfarl@aol.com)

Typeset by SNP Best-set Typesetter Ltd, Hong Kong
Printed by TJ International Limited, Padstow, Cornwall, England

Contents

	<i>Contributor contact details</i>	xv
	Introduction L DI SILVIO, King's College London, UK	xxi
Part I	Cell responses to biomaterials using polymers and ceramics	1
1	Biocompatible three-dimensional scaffolds for tendon tissue engineering using electrospinning L BOSWORTH and S DOWNES, The University of Manchester, UK	3
1.1	Introduction	3
1.2	Electrospinning	4
1.3	Electrospinning applications in tissue engineering	8
1.4	Scaffold requirements	10
1.5	Cell response	10
1.6	Porosity	11
1.7	Fibre orientation	12
1.8	Surface wettability	14
1.9	Functionalising fibres	15
1.10	Electrospinning for tendon regeneration	17
1.11	Electrospun fibre bundles	19
1.12	Future trends	23
1.13	Sources of further information and advice	23
1.14	References	23
2	Degradable polymers and polymer composites for tissue engineering S DEB, King's College London, UK	28
2.1	Introduction	28
2.2	Degradable polymers	29

2.3	Degradable composites	42
2.4	Fibre scaffolds	49
2.5	Injectable composites	51
2.6	Drug delivery from resorbable scaffolds	52
2.7	Conclusions	53
2.8	References and further reading	53
3	Biocompatibility of degradable polymers for tissue engineering	61
	N GURAV, Northwick Park Institute of Medical Research (NPIMR), UK and L DI SILVIO, King's College London, UK	
3.1	Introduction	61
3.2	Biocompatibility	63
3.3	Degradable polymers	66
3.4	Practical problems during biocompatibility testing	68
3.5	Degradation mechanisms and devising the appropriate tests	70
3.6	<i>In-vitro</i> biocompatibility testing	70
3.7	<i>In-vivo</i> biocompatibility testing	75
3.8	Immune response	76
3.9	Discussion	79
3.10	References	80
4	Cellular response to the surface chemistry of nanostructured biomaterials	85
	M A BARBOSA, M C L MARTINS and J N BARBOSA, INEB, Universidade do Porto, Portugal	
4.1	Introduction	85
4.2	Nanostructured surfaces and materials	86
4.3	Influence of surface chemistry on protein adsorption	93
4.4	Influence of surface chemistry on cell response	102
4.5	Future trends	106
4.6	References	107
5	Biocompatibility and other properties of hydrogels in regenerative medicine	114
	A SANNINO and M MADAGHIELE, University of Salento, Italy and L AMBROSIO, Institute of Composite and Biomedical Materials (IMCB-CNR), Italy	
5.1	Gels and hydrogels: definition and classification	114
5.2	Hydrogel swelling ratio	116
5.3	Microstructural parameters/design variables for polymeric networks	117

5.4	Hydrogels in biomedical fields: optimization of chemical/physical properties for selected applications	126
5.5	Conclusions	131
5.6	References	132
6	Cellular response to bioceramics	136
	A WOESZ and S M BEST, University of Cambridge, UK	
6.1	Introduction	136
6.2	A short history of the usage of ceramic materials in the human body	136
6.3	Types of ceramics used in the human body: bioinert, bioactive and bioresorbable	137
6.4	Biological and mechanical behaviour of various classes of materials	138
6.5	Dense versus porous ceramic materials	141
6.6	Cell reactions to ceramic materials	142
6.7	Summary and future trends	149
6.8	References	150
7	Biocompatibility and other properties of phosphate-based glasses for medical applications	156
	E A ABOU NEEL and J C KNOWLES, University College London, UK	
7.1	Historical overview	156
7.2	Glass structure theories	157
7.3	Glass formation	158
7.4	Chemistry of phosphate-based glasses	159
7.5	Properties of phosphate-based glasses	162
7.6	Biomedical applications of phosphate-based glasses	164
7.7	<i>In vitro</i> studies on phosphate-based glasses	165
7.8	<i>In vivo</i> studies on phosphate-based glasses	172
7.9	Phosphate-based glasses in composites	173
7.10	Phosphate-based glass fibres	173
7.11	Future trends using phosphate-based glasses	177
7.12	References	178
Part II	Cell responses and regenerative medicine	183
8	Biodegradable scaffolds for tissue engineering	185
	V SALIH, University College London, UK	
8.1	Introduction	185
8.2	What is a scaffold?	187

8.3	Importance of scaffold design and manufacture	188
8.4	Types of scaffold material	189
8.5	Scaffold design and processing	193
8.6	Advantages and limitations of scaffolds	196
8.7	Monitoring cell behaviour in scaffolds	197
8.8	Nanotechnology and scaffolds	198
8.9	Scaffold applications in gene therapy	199
8.10	Future trends	200
8.11	Conclusions	202
8.12	Acknowledgements	202
8.13	Sources of further information and advice	202
8.14	References	203
9	Developing smaller-diameter biocompatible vascular grafts	212
	K D ANDREWS and J A HUNT, University of Liverpool, UK	
9.1	Introduction	212
9.2	Vascular grafts with respect to natural blood vessels	213
9.3	Why development of small-calibre vascular grafts is needed	215
9.4	Initial scaffolds investigated for use as vascular grafts	217
9.5	Further development and modification to biomaterials used as vascular grafts	222
9.6	Electrostatically spun scaffolds as vascular grafts	230
9.7	Future trends	232
9.8	Conclusions	232
9.9	References	233
10	Improving biomaterials in tendon and muscle regeneration	237
	V MUDERA, U CHEEMA, R SHAH and M LEWIS, University College London, UK	
10.1	Tendons and their mechanical properties	237
10.2	Biomaterials used in tendon regeneration	238
10.3	Muscles and their mechanical properties	242
10.4	Biomaterials used in muscle regeneration	243
10.5	Conclusions	248
10.6	References	248
11	Biomaterials for the repair of peripheral nerves	252
	S HALL, King's College London, UK	
11.1	Introduction	252
11.2	The structure of a peripheral nerve fibre: an overview	254

11.3	The injury response in the peripheral nervous system (PNS)	257
11.4	Clinical need: alternatives to autografts	262
11.5	Nerve guides	263
11.6	Why work on short gaps?	276
11.7	The 'smart' conduit	277
11.8	References	278
12	Stem cells and tissue scaffolds for bone repair	291
	S SCAGLIONE and R QUARTO, University of Genova, Italy and P GIANNONI, Advanced Biotechnology Center (CBA), Italy	
12.1	Introduction	291
12.2	Biomaterials as biomimetic scaffolds	292
12.3	Adult stem cell sources	294
12.4	Targeting stemness within the bone marrow niche: microenvironmental evidence and co-cultures	300
12.5	Stem cell-induced immunomodulation: a shared characteristic?	305
12.6	Future trends	306
12.7	Conclusions	307
12.8	References	308
13	Cellular response to osteoinductive materials in orthopaedic surgery	313
	L DI SILVIO and P JAYAKUMAR, King's College London, UK	
13.1	Introduction	313
13.2	Osteoinduction and bone healing	316
13.3	Bone morphogenetic proteins (BMPs)	318
13.4	Bone graft biomaterials and bone healing	323
13.5	Osteoinductivity and bone healing	324
13.6	Osteoconduction and bone healing	325
13.7	Osseointegration and bone healing	326
13.8	Bone graft materials	326
13.9	Osteoinductive materials	326
13.10	Synthetic bone graft substitutes (SBGSs)	332
13.11	Bone graft biomaterials and remodelling	334
13.12	Discussion	335
13.13	References	336
14	Cellular response to bone graft matrices	344
	A B M RABIE and R W K WONG, University of Hong Kong, Hong Kong	
14.1	Introduction	344

14.2	Demineralized intramembranous bone matrix (DBM _{IM})	344
14.3	HMG-CoA reductase inhibitor: HMGR _I -collagen matrix	353
14.4	Polymethoxylated flavonoid-collagen matrix	358
14.5	Phytoestrogen-collagen matrix	360
14.6	Conclusions	364
14.7	References	364
14.8	Appendix	368
15	Cellular response to hydroxyapatite and Bioglass® in tissue engineering and regenerative medicine	371
	J HUANG, University College London, UK	
15.1	Introduction	371
15.2	Cellular responses to Bioglass® and hydroxyapatite particles	372
15.3	Cellular responses to Bioglass® and hydroxyapatite reinforced biocomposites	382
15.4	Interaction of human osteoblast (HOB) cells and biocomposites at the ultrastructural level	385
15.5	Summary	387
15.6	References	388
16	Diamond-like carbon (DLC) as a biocompatible coating in orthopaedic and cardiac medicine	391
	W MA, A J RUYTS and H ZREIQAT, The University of Sydney, Australia	
16.1	Introduction	391
16.2	Deposition and characterization of DLC coatings	393
16.3	Physical properties of DLC coatings	397
16.4	Biocompatibility of DLC	401
16.5	Corrosion behaviour of DLC	405
16.6	DLC for orthopaedic applications	406
16.7	DLC for selective blood-interfacing applications	408
16.8	Conclusions	411
16.9	Acknowledgements	412
16.10	References	412
Part III	The effect of surfaces and proteins on cell response	427
17	Cell response to nanofeatures in biomaterials	429
	A CURTIS and M DALBY, Glasgow University, UK	
17.1	Introduction: why should cells respond to nanofeatures?	429

17.2	Making artificial nanofeatures: fabrication methods including embossing	430
17.3	The range of reactions to nanotopography	436
17.4	Cell signalling in response to nanofeatures	440
17.5	Reactions at the genome to morphological effects of topography on cells	446
17.6	Related topics	451
17.7	Future trends	452
17.8	References	453
18	Cell response to surface chemistry in biomaterials C A SCOTCHFORD, University of Nottingham, UK	462
18.1	Introduction	462
18.2	The role of proteins in the cell response to surface chemistry	464
18.3	Cell response to model surfaces	465
18.4	Mechanisms for cell responses to surfaces	468
18.5	Exploitation of cell response to surface chemistry	471
18.6	Future trends	473
18.7	References	474
19	Bioactive surfaces using peptide grafting in tissue engineering M DETIN, University of Padova, Italy	479
19.1	Biomimetic materials and bioactive surfaces	479
19.2	Peptide mimicry for bioactive surface design	483
19.3	Delivery of bioactive peptides to tissue–surface interface	486
19.4	Criteria for bioactive surfaces design	489
19.5	<i>In vitro</i> and <i>in vivo</i> applications of bioactive surfaces	490
19.6	Future trends	502
19.7	References	502
20	<i>In vitro</i> testing of biomaterial toxicity and biocompatibility S INAYAT-HUSSAIN and N F RAJAB, Universiti Kebangsaan Malaysia, Malaysia and E L SIEW, Melaka Biotechnology Corporation, Malaysia	508
20.1	Introduction	508
20.2	Biocompatibility	509
20.3	Toxicity testing: <i>in vitro</i> methods	512
20.4	Cytotoxicity	513
20.5	Cell death	519
20.6	<i>In vitro</i> genotoxicity testing of biomaterial	525

20.7	Future trends	531
20.8	References	532
21	The influence of plasma proteins on bone cell adhesion	538
	Å ROSENGREN and S OSCARSSON, Mälardalen University, Sweden	
21.1	Introduction	538
21.2	Protein material interactions: flow-based protein adsorption analysis	540
21.3	Bicinchoninic acid (BCA) protein assay	541
21.4	Two-dimensional gel electrophoresis	543
21.5	Western immunoblotting	544
21.6	Protein characterization	544
21.7	Ellipsometry	546
21.8	Cell–substrate interactions: study methods	548
21.9	Protein–cell interactions	550
21.10	References	555
22	Degradation of calcium phosphate coatings and bone substitutes	560
	S OVERGAARD, Odense University Hospital, Clinical Institute and University of Southern Denmark, Denmark	
22.1	Introduction and demand for coatings and bone substitutes	560
22.2	Requirements for coatings and bone substitutes	562
22.3	Mechanical properties of coatings and bone substitutes	562
22.4	Degradation of coatings and bone substitutes	563
22.5	Discussion	566
22.6	Choice of bone substitute, and future trends	567
22.7	Conclusions	568
22.8	References	568
23	Surface-modified titanium to enhance osseointegration in dental implants	572
	L SARINNAPHAKORN and L DI SILVIO, King’s College London, UK	
23.1	Introduction	572
23.2	Dental implant and osseointegration	573
23.3	Mechanism of peri-implant endosseous healing	574
23.4	The ‘loss of osseointegration’ phenomenon	574
23.5	Surface modification of dental implant	575
23.6	Commercial surface-modified titanium implants	580

23.7	Current treatment modalities	582
23.8	Future trends in dental implant surfaces	584
23.9	Conclusions	585
23.10	References	586
24	Surface modification of titanium for the enhancement of cell response	589
	R CHIESA, Politecnico di Milano, Italy	
24.1	Titanium for hard and soft tissue applications	589
24.2	Mechanical, physical and thermal modification treatments of titanium	593
24.3	Chemical and electrochemical modification treatments of titanium	594
24.4	The biocompatibility enhancement of titanium	602
24.5	Conclusions	605
24.6	References	605
	<i>Index</i>	609

Contributor contact details

(* = main contact)

Editor

Dr Lucy Di Silvio
Department of Biomaterials and
Biomimetics Research
King's College London Dental
Institute
Floor 17, Guy's Tower, Guy's
Campus
London Bridge
London SE1 9RT
UK
E-mail: Lucy.di_silvio@kcl.ac.uk

Chapter 1

Miss L. Bosworth* and Professor
S. Downes
Department of Biomaterials
School of Materials Science
University of Manchester
Grosvenor Street
Manchester M1 7HS
UK
E-mail: lbosworth81@yahoo.co.uk
sandra.downes@manchester.ac.uk

Chapter 2

Dr Sanjukta Deb
Department of Biomaterials and
Biomimetics Research
King's College London Dental
Institute
Floor 17, Guy's Tower, Guy's
Campus
London Bridge
London SE1 9RT
UK
E-mail: sanjukta.deb@kcl.ac.uk

Chapter 3

Dr Neelam Gurav*
Northwick Park Institute of
Medical Research (NPIMR)
Northwick Park Hospital and
St Marks Trust (Y Block)
Watford Road
Harrow HA1 3UJ
UK
E-mail: n.gurav@imperial.ac.
uk

Dr Lucy Di Silvio
Department of Biomaterials and
Biomimetics Research
King's College London Dental
Institute
Floor 17, Guy's Tower, Guy's
Campus
London Bridge
London SE1 9RT
UK

Chapter 4

M.A. Barbosa,* M.C. Lopes
Martins and J. Novais Barbosa
INEB-Instituto de Engenharia
Biomédica
Universidade do Porto
Rua do Campo Alegre, 823
4150-180 Porto
Portugal
E-mail: mbarbosa@ineb.up.pt

Chapter 5

A. Sannino and M. Madaghiele
Department of Engineering for
Innovation
University of Salento
Via per Monteroni
73100 Lecce
Italy

L. Ambrosio*
Institute of Composite and
Biomedical Materials
(IMCB-CNR)
National Research Council
Piazzale Tecchio 80
80125 Naples
Italy
E-mail: ambrosio@unina.it

Chapter 6

Dr A. Woesz* and Dr S.M. Best
Cambridge Centre for Medical
Materials
University of Cambridge
Pembroke Street
Cambridge CB2 3QZ
UK
E-mail: Alexander@woesz.com
smb51@hermes.cam.ac.uk

Chapter 7

E.A. Abou Neel and J.C. Knowles*
Division of Biomaterials and Tissue
Engineering
University College London
Eastman Dental Institute
256 Gray's Inn Road
London WC1X 8LD
UK
E-mail: j.knowles@eastman.ucl.
ac.uk

Chapter 8

V. Salih
Division of Biomaterials & Tissue
Engineering
University College London
Eastman Dental Institute
256 Gray's Inn Road
London WC1X 8LD
UK
E-mail: v.salih@eastman.ucl.ac.uk

Chapter 9

Dr K.D. Andrews and
Dr J.A. Hunt*
Clinical Engineering (UK CTE)
UK BioTEC
School of Clinical Sciences
University of Liverpool
Ground Floor
Duncan Building
Daulby Street
Liverpool L69 3GA
UK
E-mail: huntja@liverpool.ac.uk

Chapter 10

Dr V. Mudera,* Dr U. Cheema,
Dr R. Shah and Dr M. Lewis
Tissue Repair and Engineering
Centre
University College London
Institute of Orthopaedics and
Musculoskeletal Science
Royal National Orthopaedic
Hospital
Brockley Hill
Stanmore HA7 4LP
UK
E-mail: rmhkvim@ucl.ac.uk

Chapter 11

Professor Susan Hall
Department of Anatomy and
Human Sciences
King's College London
London SE1 1UL
UK
E-mail: susan.standing@kcl.ac.uk

Chapter 12

Dr S. Scaglione
Department of Communication,
Computer and System Sciences
(DIST)
University of Genova
Viale Causa 13
16145 Genova
Italy
E-mail: silvia.scaglione@unige.it

Dr P. Giannoni
Stem Cell Laboratory
Advanced Biotechnology Center
(CBA)
Largo Rosanna Benzi n°10
16132 Genova
Italy
E-mail: paolo.giannoni@
cba-biotecnologie.it

Professor R. Quarto*
Department of Pharmaceutical and
Food Chemistry and
Technologies (DICTFA)
University of Genova
Largo Rosanna Benzi n°10
16132 Genova
Italy
E-mail: rodolfo.quarto@unige.it

Chapter 13

Dr Lucy Di Silvio and P Jayakumar
Department of Biomaterials and
Biomimetics Research
King's College London Dental
Institute
Floor 17, Guy's Tower, Guy's
Campus
London Bridge
London SE1 9RT
UK
E-mail: Lucy.di_silvio@kcl.ac.uk

Chapter 14

Professor A.B.M. Rabie* and
Dr R.W.K. Wong
Biomedical and Tissue Engineering
University of Hong Kong
2/F, Prince Philip Dental Hospital
34 Hospital Road, Saiyingpun
Hong Kong
E-mail: rabie@hkusua.hku.hk

Chapter 15

Dr J. Huang
Department of Mechanical
Engineering
University College London
Torrington Place
London WC1E 7JE
UK
E-mail: jie.huang@ucl.ac.uk

Chapter 16

W.J. Ma, Professor A.J. Ruys and
Dr H. Zreiqat*
Biomedical Engineering
School of AMME
Camperdown Campus 2006
The University of Sydney
Sydney
Australia
E-mail: hzreiqat@usyd.edu.au

Chapter 17

Professor A. Curtis* and
Dr M.J. Dalby
Centre for Cell Engineering
Joseph Black Building
Glasgow University
University Avenue
Glasgow G12 8QQ
Scotland
E-mail: a.curtis@bio.gla.ac.uk

Chapter 18

Dr Colin Scotchford
School of Mechanical, Materials
and Manufacturing Engineering
University of Nottingham
University Park
Nottingham NG7 2RD
UK
E-mail: Colin.Scotchford@
nottingham.ac.uk

Chapter 19

Monica Dettin
Department of Chemical Process
Engineering
University of Padova
Via Marzolo, 9
35131 Padova
Italy
E-mail: monica.dettin@unipd.it

Chapter 20

Professor S.H. Inayat-Hussain*
Environmental Health Programme
Faculty of Allied Health Sciences
Universiti Kebangsaan Malaysia
Jalan Raja Muda Abdul Aziz
50300 Kuala Lumpur
Malaysia
E-mail: salmaan@streamyx.com

E.L. Siew
Toxicology Laboratory
Melaka Biotechnology Corporation
Lot 7, MITC City
75450 Ayer Keroh, Melaka
Malaysia

Dr N.F. Rajab
Biomedical Science Department
Faculty of Allied Health Sciences
Universiti Kebangsaan Malaysia
Jalan Raja Muda Abdul Aziz
50300 Kuala Lumpur
Malaysia

Chapter 21

Å. Rosengren and S. Oscarsson*
Mälardalen University
Department of Surface
Biotechnology
Box 325
63105 Eskilstuna
Sweden
E-mail: sven@svenoscarsson.com

Chapter 22

Professor Søren Overgaard
Department of Orthopaedic
Surgery
Odense University Hospital
Faculty of Health Science
Clinical Institute
University of Southern Denmark
Denmark
E-mail: soeren.overgaard@ouh.
regionsyddanmark.dk

Chapter 23

Dr Lucy Di Silvio and
Lertrit Sarinnaphakorn*
Department of Biomaterials and
Biomimetics Research
King's College London Dental
Institute
Floor 17, Guy's Tower, Guy's
Campus
London Bridge
London SE1 9RT
UK
E-mail: lertrit.sarinnaphakorn@
kcl.ac.uk
Lucy.di_silvio@kcl.ac.uk

Chapter 24

Professor Roberto Chiesa
Dipartimento di Chimica, Materiali
e Ingegneria Chimica 'G. Natta'
Politecnico di Milano
Via Mancinelli 7
20131 Milano
Italy
E-mail: roberto.chiesa@polimi.it